



**REGIONAL SPECIALISED METEOROLOGICAL CENTRE-TROPICAL CYCLONES, NEW DELHI  
TROPICAL WEATHER OUTLOOK**

**DEMS-RSMC TROPICAL CYCLONES NEW DELHI DATED 24.08.2024**

**TROPICAL WEATHER OUTLOOK FOR NORTH INDIAN OCEAN (THE BAY OF BENGAL AND THE ARABIAN SEA) VALID FOR NEXT 168 HOURS ISSUED AT 0600 UTC OF 24.08.2024 BASED ON 0300 UTC OF 24.08.2024.**

**BAY OF BENGAL:**

YESTERDAY'S LOW PRESSURE AREA OVER NORTHWEST JHARKHAND & NEIGHBOURHOOD MOVED NEARLY WESTWARDS AND LAY AS WELL MARKED LOW PRESSURE AREA OVER SOUTHEAST UTTAR PRADESH & ADJOINING NORTHEAST MADHYA PRADESH AT 0830 HRS IST OF TODAY, 24TH AUGUST 2024. THE ASSOCIATED CYCLONIC CIRCULATION EXTENDED UPTO 7.6 KM ABOVE MEAN SEA LEVEL. IT IS LIKELY TO CONTINUE TO MOVE NEARLY WESTWARDS AND INTENSIFY INTO A DEPRESSION OVER WEST MADHYA PRADESH BY 26TH AND REACH SOUTH RAJASTHAN AND ADJOINING NORTH GUJARAT BY 27TH AUGUST.

CLOUDS ASSOCIATED WITH LOW PRESSURE AREA ARE SCATTERED TO BROKEN LOW AND MEDIUM CLOUDS WITH EMBEDDED INTENSE TO VERY INTENSE CONVECTION LAY OVER EAST MADHYA PRADESH (MINIMUM CTT MINUS 80 DEG CEL) AND MODERATE TO INTENSE CONVECTION LAY OVER NORTH CHHATTISGARH ADJOINING SOUTH EAST UTTAR PRADESH & ADJOINING NORTHWEST JHARKHAND (MINIMUM CTT MINUS 50-60 DEG CEL).

YESTERDAY'S CYCLONIC CIRCULATION LAY OVER NORTH BAY OF BENGAL NOW LIES BETWEEN 3.1 & 5.8 KM ABOVE MEAN SEA LEVEL. UNDER ITS INFLUENCE, A LOW PRESSURE AREA IS LIKELY TO FORM OVER THE SAME REGION DURING NEXT 48 HOURS.

SCATTERED TO BROKEN LOW AND MEDIUM CLOUDS WITH EMBEDDED INTENSE TO VERY INTENSE CONVECTION LAY OVER NORTH AND CENTRAL BAY OF BENGAL & SOUTH ANDAMAN SEA. SCATTERED LOW AND MEDIUM CLOUDS WITH EMBEDDED MODERATE TO INTENSE CONVECTION LAY OVER SOUTH BAY OF BENGAL NORTH ANDAMAN SEA & GULF OF MARTABAN.

**\*PROBABILITY OF CYCLOGENESIS (FORMATION OF DEPRESSION) DURING NEXT 168 HRS:**

24 HOURS	24-48 HOURS	48-72 HOURS	72-96 HOURS	96-120 HOURS	120-144 HOURS	144-168 HOURS
NIL	NIL	NIL	NIL	NIL	NIL	NIL

**\*NOTE: EVERY 24HR FORECAST IS VALID UPTO 0300 UTC (0830 IST) OF NEXT DAY**

**ARABIAN SEA:**

YESDERDAY'S LOW-PRESSURE AREA OVER EASTCENTRAL ARABIAN SEA OFF MAHARASHTRA COAST EXTENDED UPTO 3.1 KM ABOVE MEAN SEA LEVEL BECAME LESS MARKED OF MARKED AT 0300 UTC OF TODAY, THE 24TH AUGUST 2024.

SCATTERED TO BROKEN LOW AND MEDIUM CLOUDS WITH EMBEDDED INTENSE TO VERY INTENSE CONVECTION LAY OVER EASTCENTRAL ARABIAN SEA AND GULF OF CAMBAY. SCATTERED LOW AND MEDIUM CLOUDS WITH EMBEDDED MODERATE TO INTENSE CONVECTION LAY OVER WESTCENTRAL ARABIAN SEA & NORTH PARTS OF SOUTH ARABIAN SEA AND ISOLATED WEAK TO MODERATE CONVECTION LAY OVER REST OF ARABIAN SEA.

**\*PROBABILITY OF CYCLOGENESIS (FORMATION OF DEPRESSION) DURING NEXT 168 HRS:**

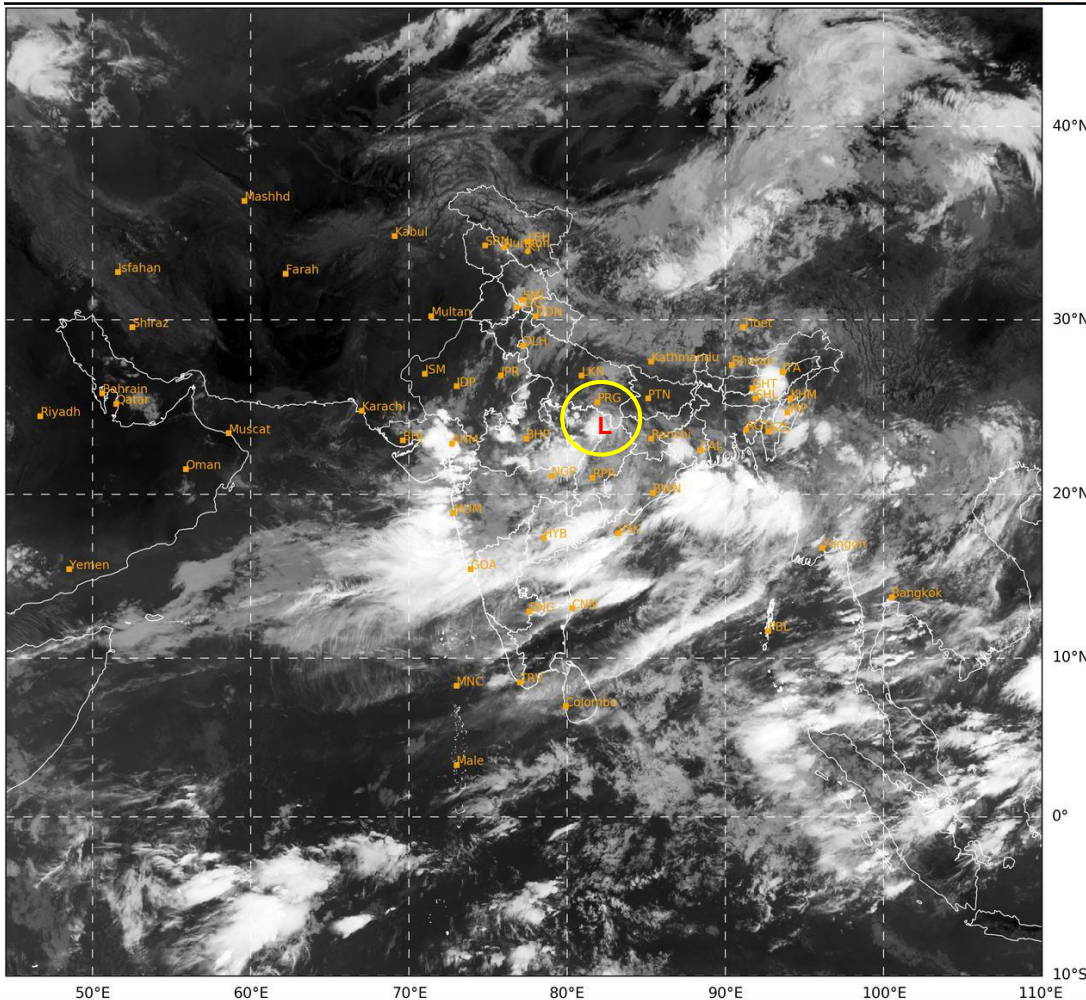
24 HOURS	24-48 HOURS	48-72 HOURS	72-96 HOURS	96-120 HOURS	120-144 HOURS	144-168 HOURS
NIL	NIL	NIL	NIL	NIL	NIL	NIL

**\*NOTE: EVERY 24HR FORECAST IS VALID UPTO 0300 UTC (0830 IST) OF NEXT DAY**

**REMARKS: NIL**

SAT : INSAT-3DR IMG  
 IMG\_TIR1 10.8 um  
 LIC Mercator

24-08-2024/(0315 to 0342) GMT  
 24-08-2024/(0845 to 0912) IST



436

939

IMD, DELHI

**L: LOW PRESSURE AREA**

Cloud distribution: (a) Isolated: <25%, Scattered:25-50%, Broken: 51-75%, Solid:>75%, Convection Intensity: (a) Weak: Cloud Top Temperature (CTT) >-25°C, (b) Moderate: CTT: - 25°C to -40°C, (c) Intense: CTT: - 41°C to -70°C and (d) Very Intense: : Less than -70°C  
 PROBABILITY OF CYCLOGENESIS (FORMATION OF DEPRESSION):NIL: 0%, LOW: 1-33%, , MODERATE: 34-66% AND HIGH: 67-100%  
 This is a guidance Bulletin for WMO/ESCAP Panel Member countries. Visit respective National websites for Country specific Bulletins